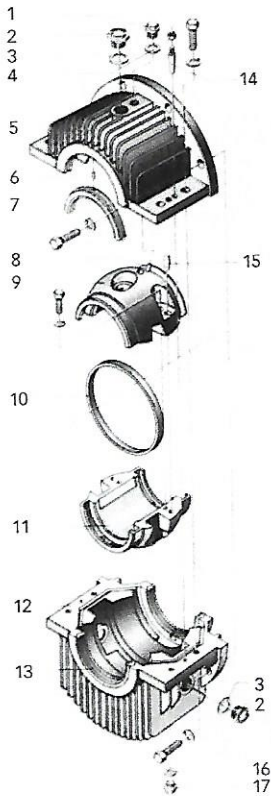
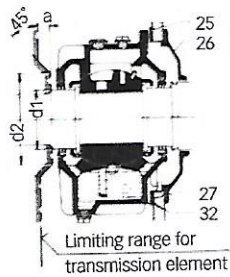
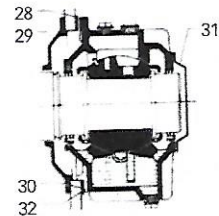
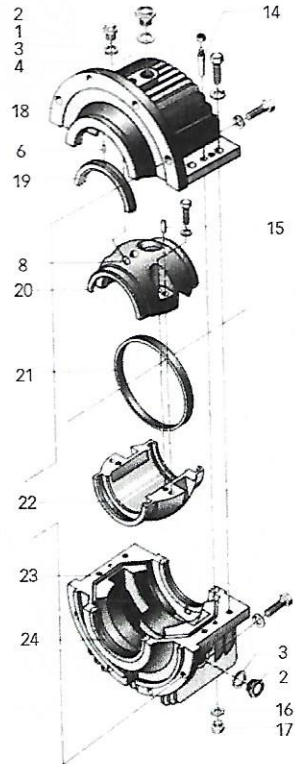


Fig. 25 Ring-lubricated flange-type sleeve bearings (examples, delivered design may deviate in details)



1. Screw plug (thermometer mounting and oil filling point)
2. Inspection glass
3. Sealing ring for 2
4. Sealing ring for 1
5. Bearing housing, upper part, drive end
6. Cylindrical pin
7. Sealing ring, upper half, drive end
8. Guide pin to prevent twisting
9. Upper bearing shell, drive end
10. Oil ring, drive end
11. Lower bearing shell, drive end
12. Bearing housing, lower half, drive end
13. Sealing ring, lower half, drive end
14. Taper pin
15. Guide pin to fix bolted parts
16. Sealing ring for 17
17. Drain plug
18. Bearing housing, upper part, non-drive end
19. Sealing ring, upper half, non-drive end
20. Upper bearing shell, non-drive end
21. Oil ring, non-drive end
22. Lower bearing shell, non-drive end
23. Bearing housing, lower part, non-drive end
24. Sealing ring, lower half, non-drive end
25. Upper adjusting shim, drive end
26. Sealing cover, drive end
27. Lower adjusting shim, drive end
28. Upper adjusting shim, non-drive end
29. Sealing cover, non-drive end
30. Lower adjusting shim, non-drive end
31. Protective cap
32. Pressure compensation opening



d1 (mm)	80	100	120	150	180	215
d2 (mm)	140	160	170	190	210	245
a (mm)	8	8	10	15	18	22